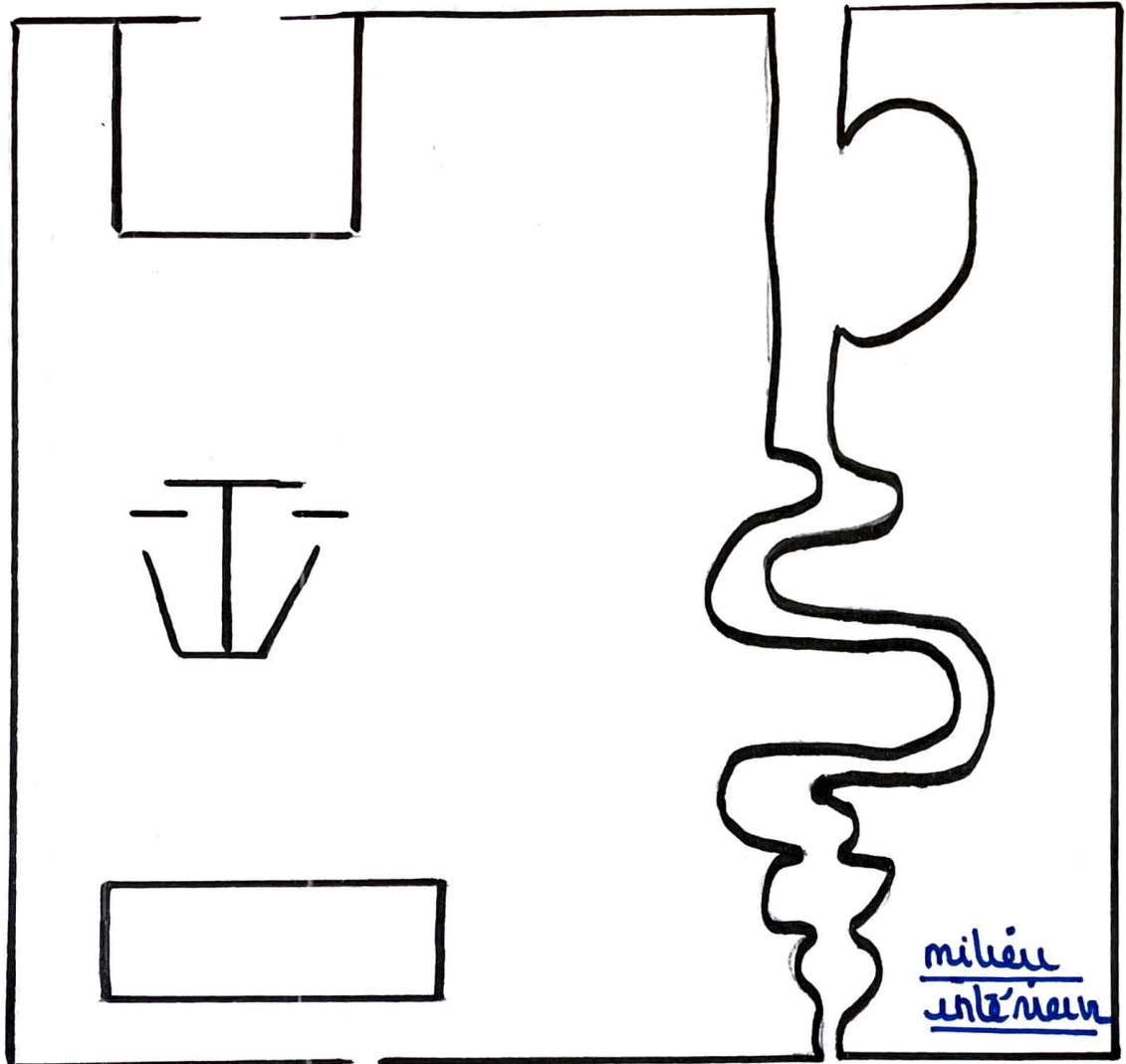


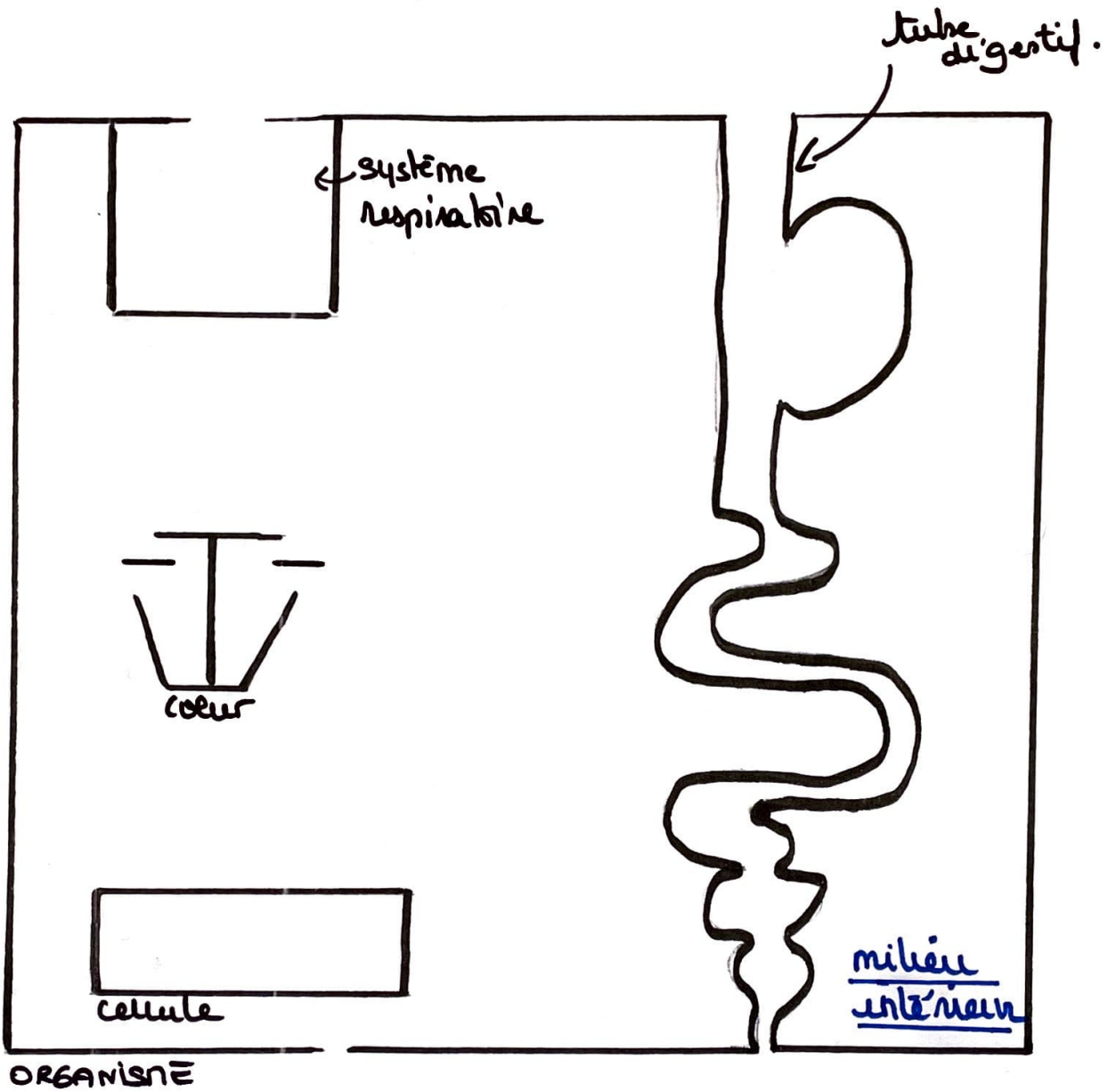
Milieu Externem



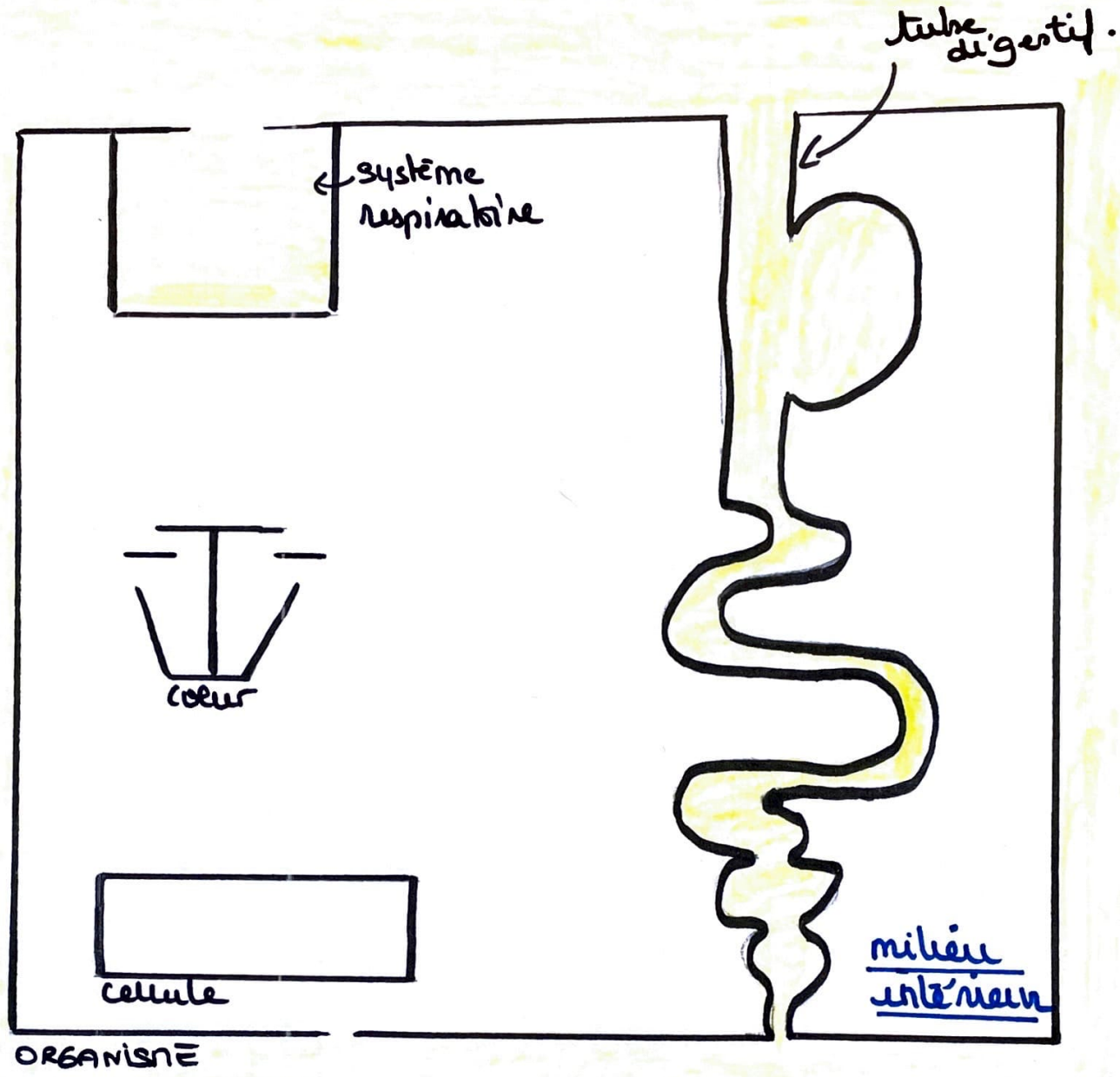
ORGANISME

milieu
interne

Milieu Externem



Milieu Extérieur



O₂

Milieu Externem

O₂

O₂

Aliments

tube digestif.

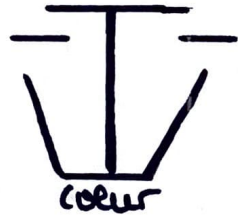
O₂

O₂

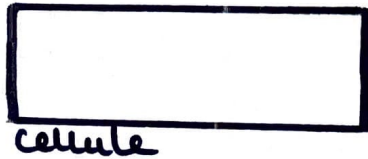
← système respiratoire

O₂

O₂

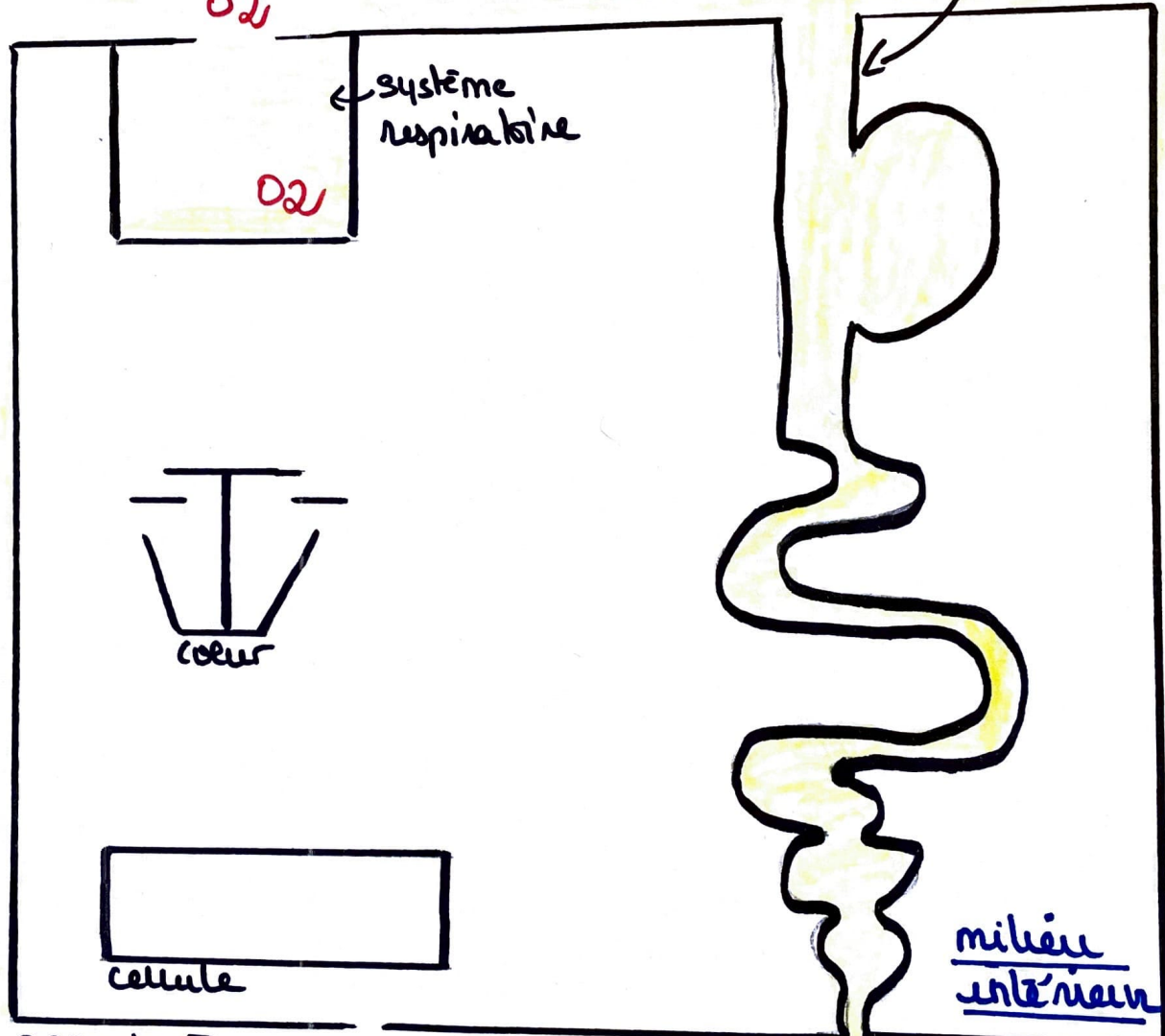


O₂



ORGANISME

milieu interne



O₂

Milieu Extérieur

O₂

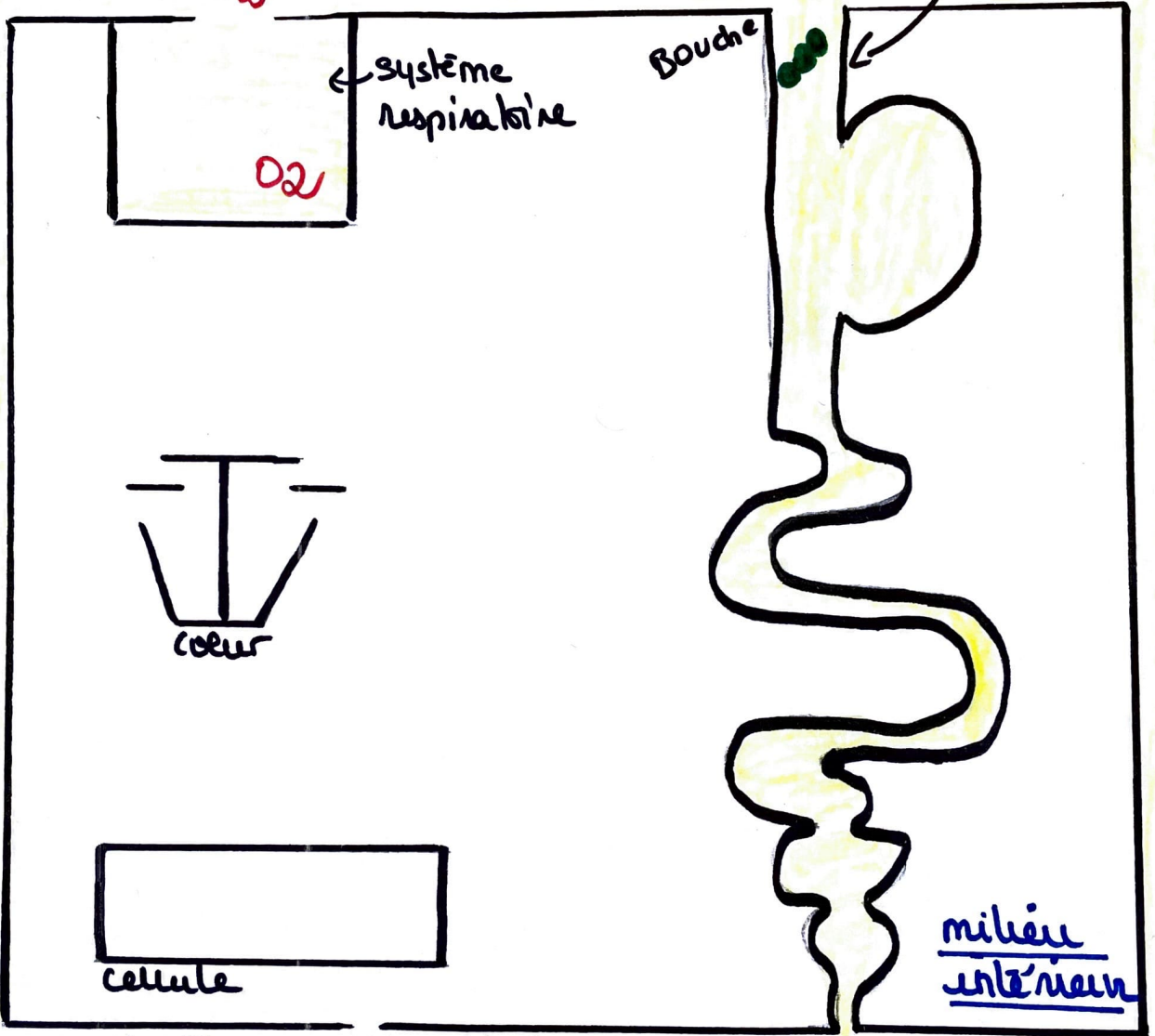
O₂

O₂

O₂

Aliments

tube digestif.



O₂

O₂

ORGANISME

Milieu Intérieur

O₂

O₂

O₂

Milieu Extern

Aliments

tube digestif.

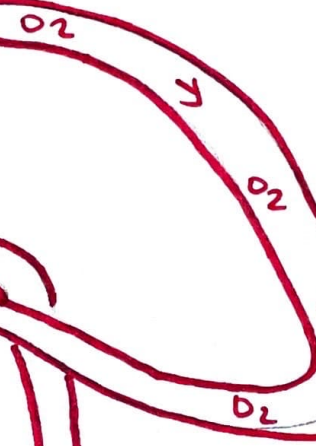
O₂

O₂

Bouche

← système respiratoire

O₂



O₂

O₂

cellule

milieu interne

ORGANISME

O₂

O₂

O₂

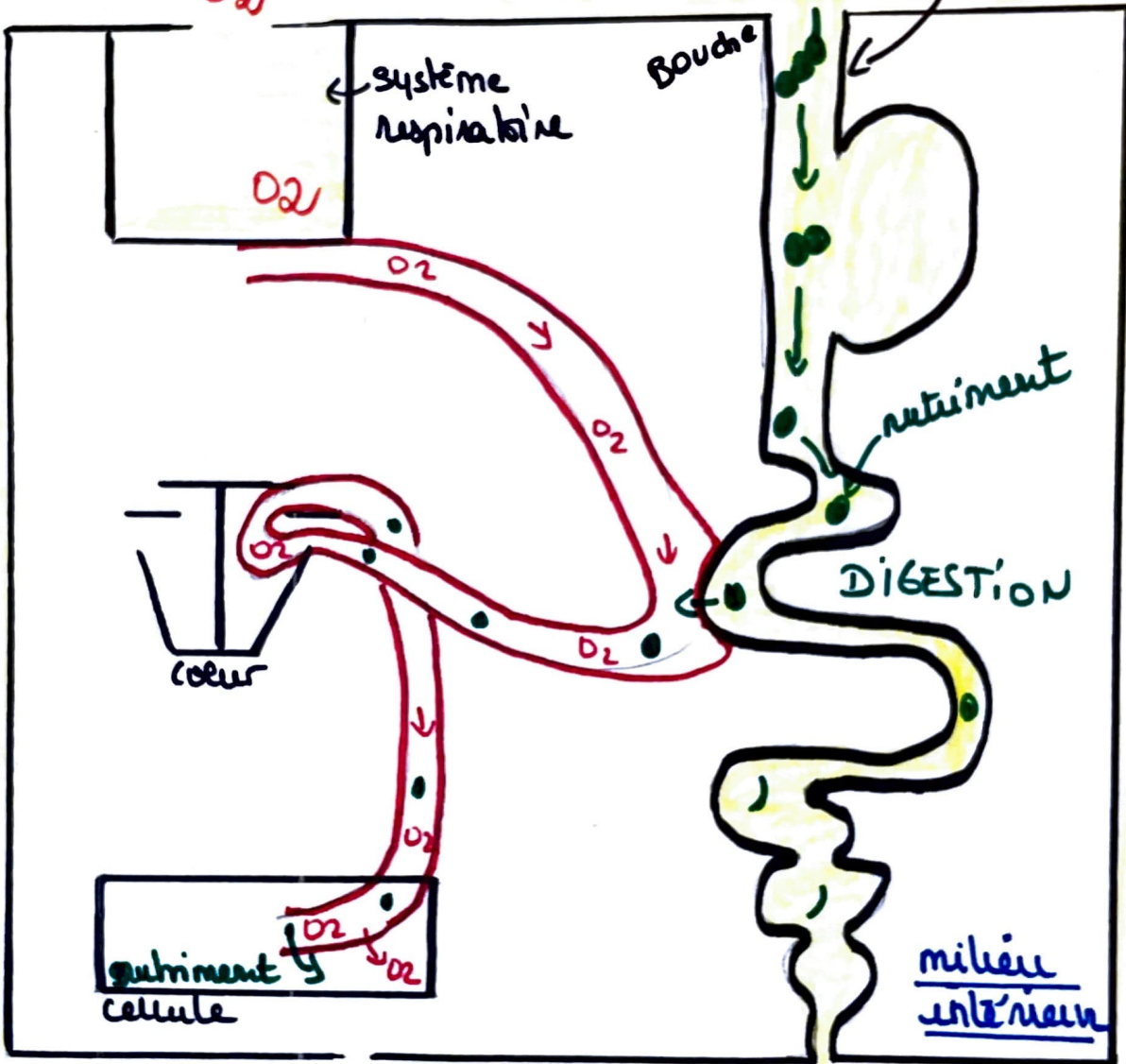
Milieu Externem

O₂

O₂

Aliments

tube digestif.



O₂

O₂

ORGANISME

milieu interne

O₂

Milieu Externem

O₂

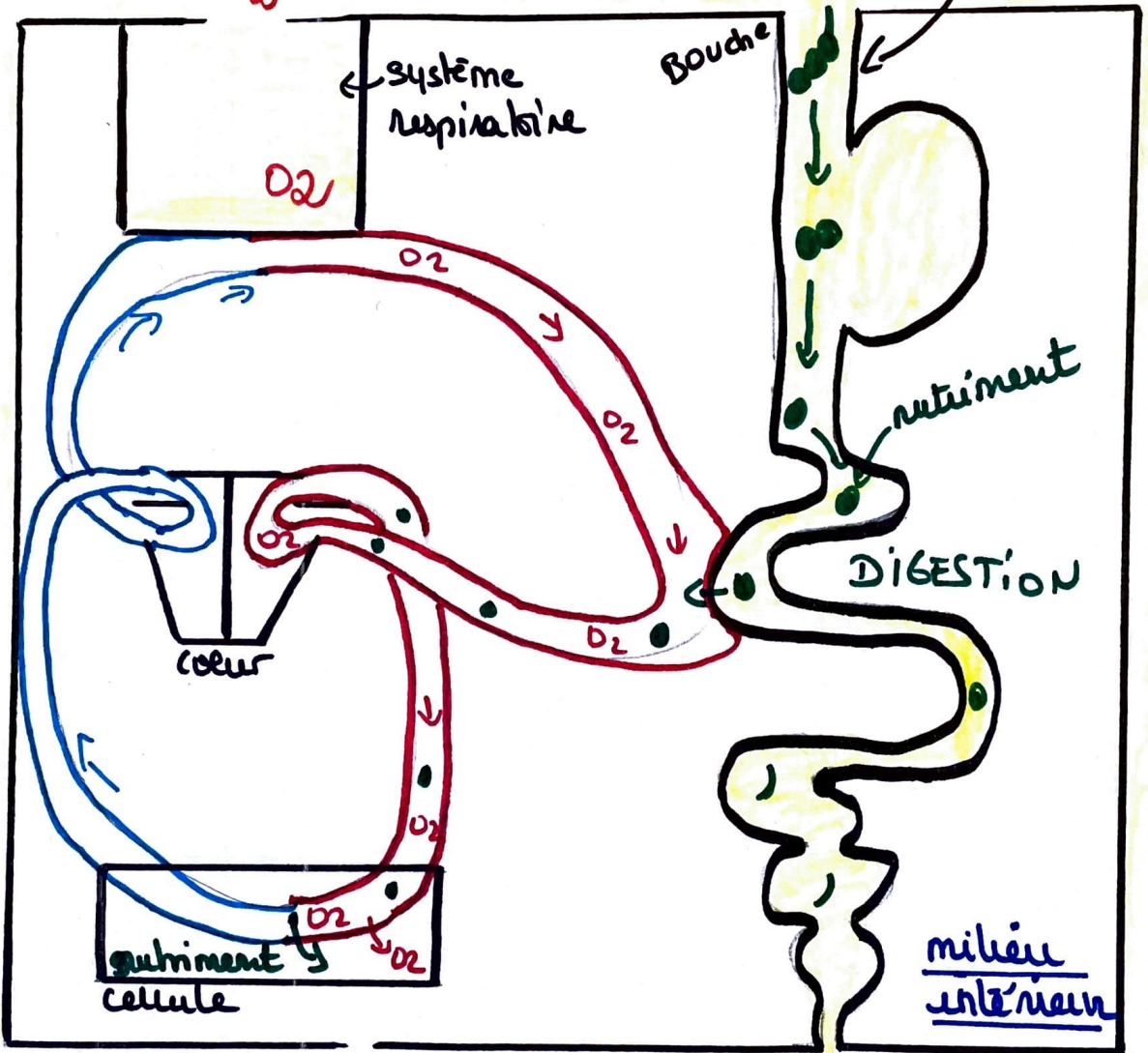
O₂

O₂

O₂

Aliments

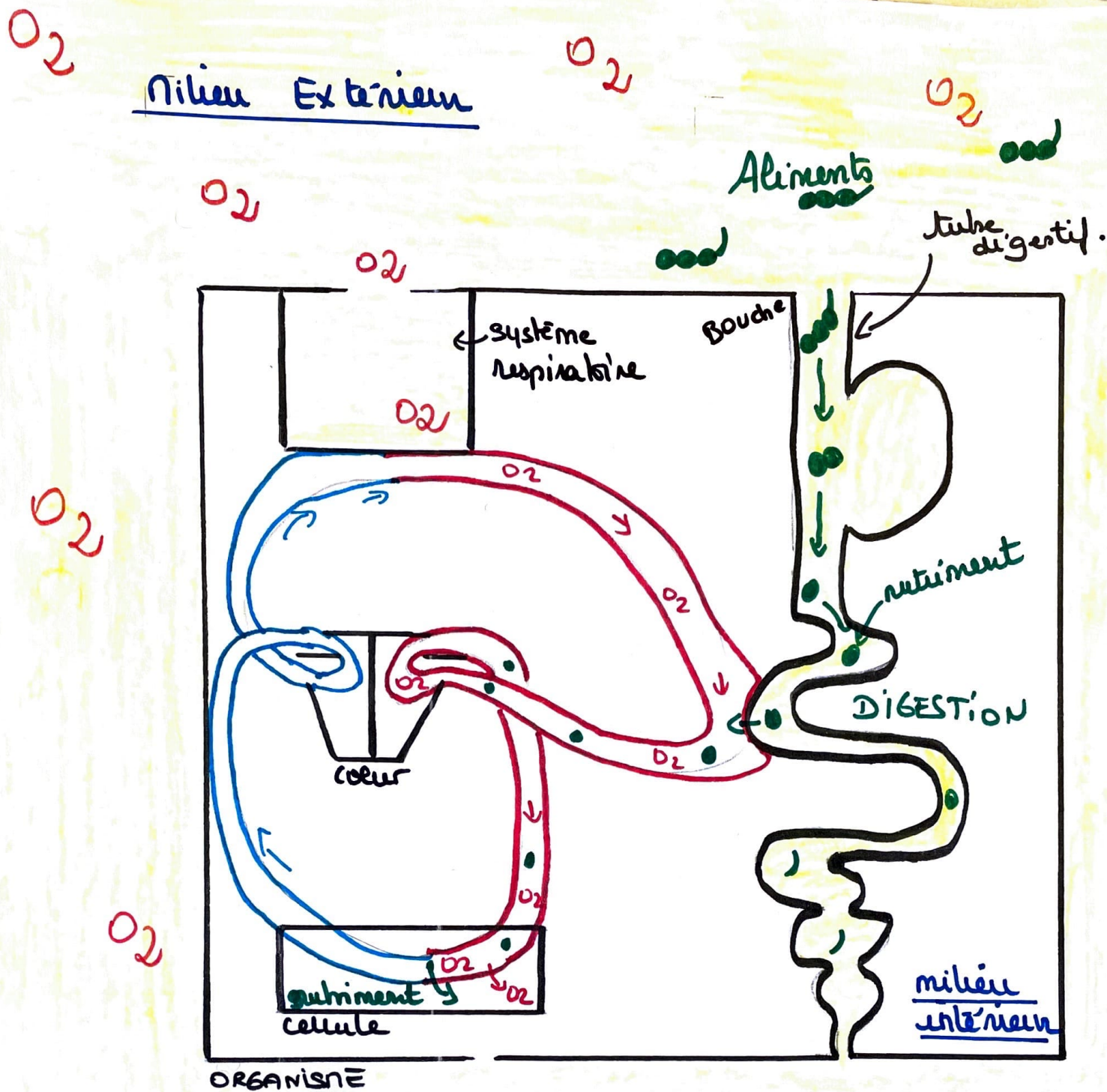
tube digestif.



O₂

O₂

ORGANISME



la nutrition chez les animaux

Rappel : nutrition =

- entrée des éléments extérieurs dans l'organisme.
- transport de ces éléments jusqu'aux cellules
- utilisation des éléments par la cellule pour produire NO et énergie